

# Logging roads in tropical forests: Synthesis of literature written in French and English highlights environmental impact reduction through improved engineering

Fritz KLEINSCHROTH<sup>1, 2, 3</sup>  
Sylvie GOURLET-FLEURY<sup>1</sup>  
Valéry GOND<sup>1</sup>  
Plinio SIST<sup>1</sup>  
John R. HEALEY<sup>2</sup>

<sup>1</sup> Cirad  
UPR BSEF  
Campus international de Baillarguet  
34398 Montpellier Cedex 05  
France

<sup>2</sup> Bangor University  
School of Environment, Natural Resources  
and Geography  
Bangor, Gwynedd  
LL57 2UW  
United Kingdom

<sup>3</sup> AgroParisTech  
Centre de Montpellier  
Agropolis International  
648 rue Jean-François Breton  
34093 Montpellier  
France



**Photo 1.**

Newly constructed logging roads in south east Cameroon and northern Republic of Congo.  
a: Primary road making permanent access to the forest. b: secondary (dead-end) road built  
for temporary use to collect timber from log landings (here stored on the road side).  
Photos F. Kleinschroth.

## RÉSUMÉ

### LES PISTES FORESTIÈRES EN FORÊT TROPICALE : UNE SYNTHÈSE DE LA LITTÉRATURE EN ANGLAIS ET EN FRANÇAIS MET EN LUMIÈRE UNE RÉDUCTION DES IMPACTS ENVIRONNEMENTAUX GRÂCE AUX TECHNIQUES D'INGÉNIERIE AMELIORÉES

Les pistes forestières sont considérées comme des causes majeures de dégradation des forêts en raison de leurs impacts directs et indirects sur le fonctionnement et la diversité des écosystèmes. Compte tenu de l'importance de l'exploitation forestière tropicale dans le monde, la bonne gestion de l'infrastructure routière est cruciale pour réduire les impacts environnementaux associés à ces activités tout en réduisant les coûts des opérations. Notre étude visait à analyser comment la question des pistes de débardage avait été traitée dans la littérature scientifique. Des études publiées depuis 65 ans, la plupart en français, dans la revue *Bois et Forêts des Tropiques* (BFT), ont été comparées à une série d'études plus récentes extraites des bases de données *Scopus* et *Web of Knowledge*. La moitié des articles BFT datent d'avant 1972, alors que les bases de données plus généralistes indiquent une augmentation régulière, depuis cette date, du nombre d'articles publiés sur ce thème, qui atteint aujourd'hui un niveau record. Sur l'ensemble de la bibliographie, nous avons sélectionné, à des fins d'évaluation critique, 126 articles traitant des impacts et de la gestion des pistes forestières tropicales. Les articles de BFT se caractérisent par une attention particulière portée à des questions pratiques d'ingénierie, tandis que de nombreux articles rédigés en anglais se concentrent sur l'identification des impacts sur les écosystèmes forestiers. Les impacts environnementaux liés aux pistes forestières proviennent de la destruction du couvert pendant leur construction, de l'accroissement des effets de lisière, de l'érosion des sols, de la perturbation de la faune et de l'accès plus facile aux forêts pour la chasse et la colonisation agricole. Nous présentons, sur la base de cette revue de la littérature, une liste de recommandations permettant de réduire ces impacts. En conclusion, nous constatons, que malgré l'intérêt continu pour le sujet des pistes forestières, nous savons très peu de choses sur leur devenir à long terme dans les paysages forestiers.

**Mots-clés :** gestion forestière durable, exploitation forestière à faible impact, écologie des pistes, exploitation sélective, dégradation forestière, conservation de la biodiversité, sols.

## ABSTRACT

### LOGGING ROADS IN TROPICAL FORESTS: SYNTHESIS OF LITERATURE WRITTEN IN FRENCH AND ENGLISH HIGHLIGHTS ENVIRONMENTAL IMPACT REDUCTION THROUGH IMPROVED ENGINEERING

Logging roads are considered to be a major cause of forest degradation because of their direct and indirect impacts on ecosystem functioning and biodiversity. Given the prevalence of logging in tropical forests around the world, effective road management is of crucial importance to reduce both logging-related environmental impacts and the costs of logging operations. Through a review of the literature, our study analysed how logging roads have been addressed in scientific articles to date. We compared studies published over the past 65 years in the *Bois et Forêts des Tropiques* journal (BFT), mostly written in French, with a range of more recent articles from the Scopus and Web of Knowledge databases. Half of the articles in BFT were published before 1972, while the more generalist databases show a steady increase in publications on the subject since then, up to the current peak number. From the entire body of literature, we selected 126 articles dealing with impacts and management of logging roads in tropical forests around the world for critical appraisal. The BFT articles were characterized by a strong focus on practical issues in forest road engineering, while the focus of many publications written in English was on the identification of road impacts on forest ecosystems. Road-related environmental impacts stem from the loss of forest cover during construction, the increase in edge effects, soil erosion and interference with wildlife, as well as from the resulting easier access to the forest for hunting and agricultural colonization. Based on this review, we present a list of recommended measures to reduce these impacts. We conclude that, despite the continuing attention given to the subject of logging roads, little is known about how they evolve in the forest landscape over the long term.

**Keywords:** sustainable forest management, low-impact logging, road ecology, selective logging, forest degradation, biodiversity conservation, soils.

## RESUMEN

### LAS VÍAS FORESTALES EN BOSQUES TROPICALES: UNA SÍNTESIS DE LA BIBLIOGRAFÍA EN INGLÉS Y FRANCÉS EVIDENCIA LA REDUCCIÓN DE IMPACTOS AMBIENTALES MEDIANTE TÉCNICAS DE INGENIERÍA MEJORADAS

Las vías forestales son consideradas como una de las principales causas de la degradación de los bosques por sus impactos directos e indirectos en el funcionamiento y diversidad de los ecosistemas. Dada la importancia del aprovechamiento forestal tropical en el mundo, una buena gestión de la red vial es crucial para reducir sus impactos ambientales y, al mismo tiempo, el costo de las operaciones. Este estudio pretende analizar cómo el tema de los caminos forestales había sido tratado en la literatura científica. Se compararon estudios publicados en los últimos 65 años, la mayoría en francés, en la revista *Bois et Forêts des Tropiques* (BFT) con una serie de estudios más recientes sacados de las bases de datos *Scopus* y *Web of Knowledge*. La mitad de los artículos de BFT son de antes de 1972, mientras que las bases de datos más generalistas muestran, desde esa fecha, un aumento constante de las publicaciones sobre el tema que alcanza hoy un nivel récord. De todo el corpus bibliográfico, se seleccionaron para su valoración crítica 126 artículos sobre el impacto y la gestión de las vías forestales tropicales. Los artículos de BFT se caracterizan por un marcado enfoque en los aspectos prácticos de ingeniería, mientras que muchos artículos redactados en inglés se centran en la identificación de impactos en los ecosistemas forestales. Los impactos ambientales vinculados a las vías forestales se derivan de la destrucción de la cubierta forestal durante su realización, el incremento de los efectos de borde, la erosión del suelo, la perturbación de la fauna y el acceso más fácil a los bosques para la caza y colonización agrícola. Basándonos en esta revisión, presentamos una lista de recomendaciones para reducir estos impactos. En conclusión, observamos que, a pesar del continuo interés por el tema de las vías forestales, no sabemos mucho sobre su evolución a largo plazo en los paisajes forestales.

**Palabras clave:** manejo forestal sostenible, aprovechamiento forestal de bajo impacto, ecología de vías forestales, tala selectiva, degradación forestal, conservación de la biodiversidad, suelos.

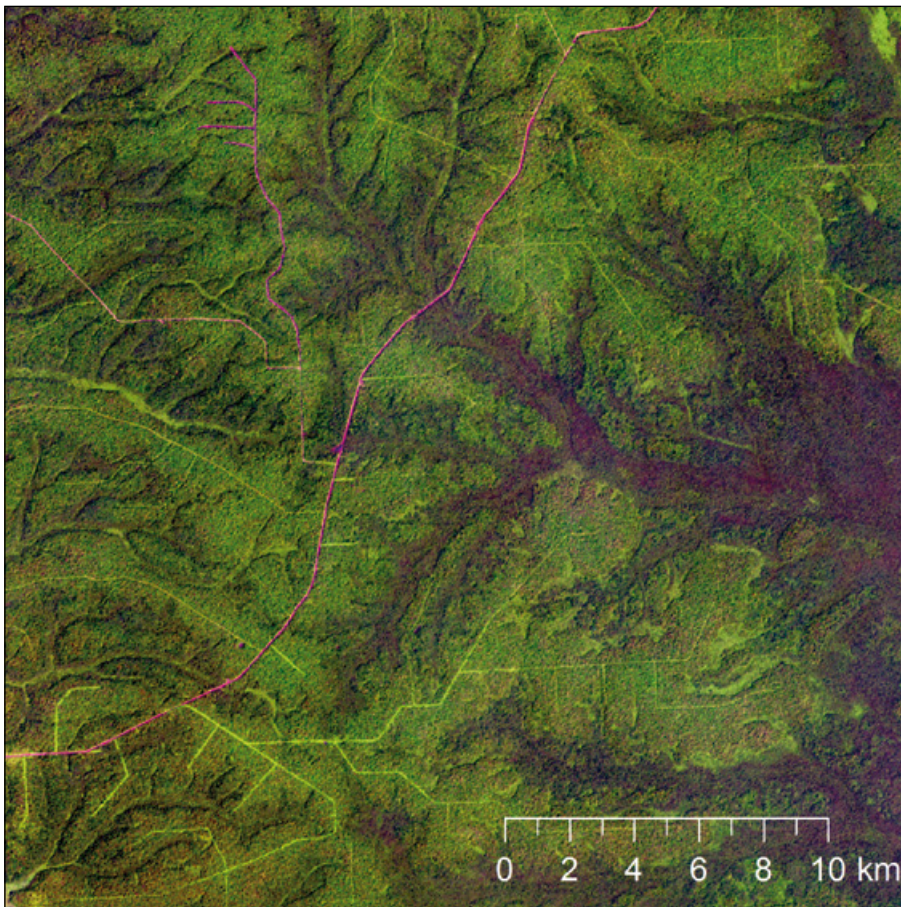
## Introduction

Almost half of all remaining tropical forests in the world are subject to selective logging, with 20% having already been logged (Asner *et al.*, 2009) and 400 million ha of natural tropical forests being in the permanent timber production estate (Blaser *et al.*, 2011). Tropical forests are of global importance for carbon storage, biodiversity, food provisioning and other ecosystem services of great value for livelihoods. With less intact tropical forest available, these pivotal functions increasingly need to be delivered by logged forests that can retain high conservation values despite the logging disturbance (Edwards and Laurance, 2013; Rutishauser *et al.*, 2015). However, destructive and poorly planned logging practices persist throughout the tropics (Putz *et al.*, 2000 and 2008) and there is an urgent need to better reconcile timber extraction with biodiversity conservation (Putz *et al.*, 2012; Edwards *et al.*, 2014).

Globally road networks have expanded rapidly over the past century, especially in tropical regions in recent years (Van Der Ree *et al.*, 2015). In production forests roads are the main infrastructure for timber extraction. Historically, in forests adjacent to large enough rivers, rafts of logs were often floated down-river, but this means of transport is decreasingly used because it is slow and subject to a high rate of losses (Wilkie *et al.*, 2000). Due to their spatial

extent, construction and maintenance of roads is the most costly component of logging operations (Holmes *et al.*, 2002; Medjibe and Putz, 2012) and also the element of logging in natural forests with the greatest environmental impacts (Mason and Putz, 2001; Laurance *et al.*, 2009). Because roads are the component of logging that is most easily detected, especially by remote sensing (figure 1), roads are frequently used as inputs for monitoring and modelling of tropical land use and land cover change (Brandão and Souza, 2006; Laporte *et al.*, 2007; Rosa *et al.*, 2014).

This article is a critical appraisal of the literature on the environmental impact of logging roads on natural tropical forests. Recent years have seen a rapid increase in articles addressing the impacts of roads on forest ecosystems. However, no previous review has adequately covered both the recent literature predominantly written in English and the previous French-language forestry literature, despite the long record of French research on tropical forest road management. We analysed the representation of logging roads in the literature over the long term with a particular focus on the question of how road-related impacts on forest ecosystems can be reduced.

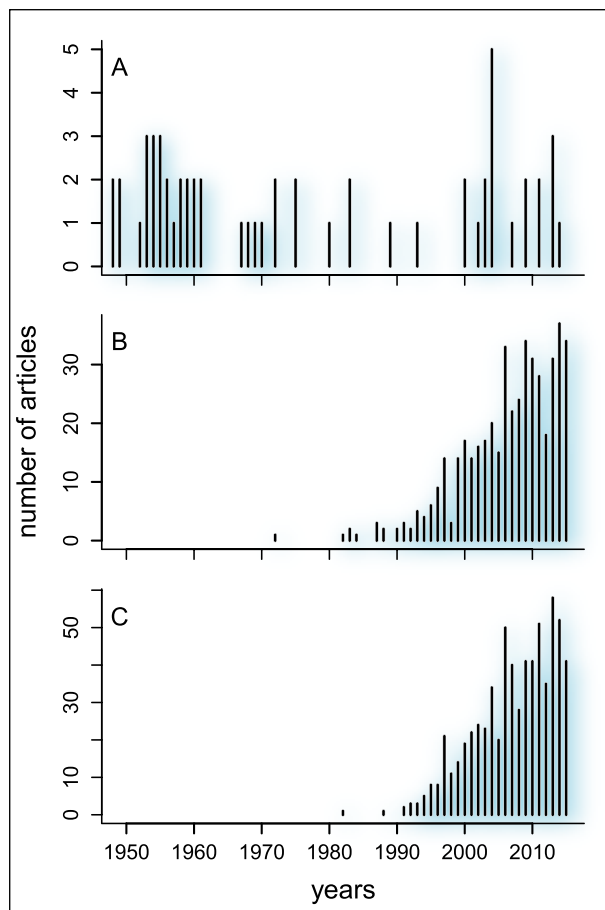


**Figure 1.** Logging roads in the Northern Republic of Congo. Red colour indicates bare soils as on currently used roads; bright green indicates high photosynthetic activity as on abandoned roads with recovering vegetation. Extract of a LANDSAT 8 image, dated 7<sup>th</sup> January 2015.

## Methods

### Literature search

We used fixed search strings to generate search hits and used their number as an indication of coverage of the subject. For the French-language literature, we chose to limit the search to the journal *Bois et Forêts des Tropiques* (BFT)<sup>1</sup>, as it is the main publication for French-language papers on this topic and it has a fully open-access archive dating back to 1947. This extensive archive is not fully covered by any of the common generalist databases and merits an analysis on its own. We used the search engine on the website <http://bft.cirad.fr/> which does not accept Boolean operators or wildcards, therefore we successively applied the search strings: “route forestière”, “piste forestière”, “route exploitation” and “piste exploitation”. For comparison we used the two most well-established databases that cover the widest scope of English-language literature, while focusing on peer-reviewed publications, Scopus and ISI Web of Knowledge. Google Scholar is also widely used to search



**Figure 2.**

Number of articles obtained by search hits for logging roads in tropical forests (exact search strings are given in the text) in the databases of (A) *Bois et Forêts des Tropiques* journal, (B) Scopus and (C) ISI Web of Knowledge.

for scientific literature as it also includes grey literature, books and reports. However, due to practical constraints a systematic assessment of this source was not possible and we only used it to select some influential publications outside peer-reviewed journals. In Scopus we used the search strings: “logging OR forest AND road AND tropic\*” and in Web of Knowledge “(logging OR forest) AND road AND tropic\*”. According to their websites the Scopus archive dates back to 1966 and Web of Knowledge covers articles back to 1900, however these databases are not transparent about the date since when articles from different sources are included. The total number of articles obtained by search hits was 57 for BFT, 656 for Web of Knowledge and 463 for Scopus. The first hit for the search strings in both of the databases covering English-language literature is in the year 1972. By the end of that year, 50% of all the identified articles in BFT had already been published, with a peak in the number of articles on the subject in the early 1950s. In Web of Knowledge and Scopus the subject was covered regularly only from the 1990s onwards, with a steadily increase in the number of articles, reaching almost 60 in Web of Knowledge in 2013 (figure 2). These results are subject to bias due to the large differences in structure and coverage of the databases *versus* the single journal, BFT, and reflect the total number of papers published. We also emphasize that a wide range of forestry journals, including BFT, are only covered by Web of Science and Scopus from the 1990s onwards, therefore their earlier articles (and those from other professional forestry publications) are excluded from the searches using these two databases. The database CAB direct<sup>2</sup> has a more comprehensive coverage of the professional forestry literature, but is less used. We conducted a search only for comparison, which produced 704 hits using the same set of keywords as above. For a more systematic approach, a much wider search string would be necessary in order to capture all relevant forestry literature. Using the search string and for “...” (adding all tropical countries separated by OR ; see Petrokofsky *et al.*, 2015) generated 2721 results in CAB direct. However, even such an extensive search generates the first hits only for the year 1969, while in the year 2013 alone there were 174. This partly reflects the limited coverage of older publications also in this database (earlier literature is well covered by the publication *Forestry Abstracts*, but this could not be accessed by our on-line search) but it also shows the increasing number of articles in general, and on this subject in particular.

Notwithstanding these methodological limitations in the search for articles, our results do indicate that researchers publishing in BFT addressed the subject of roads in tropical forests at the earliest stages of the development of the subject. We therefore consider it of great interest to include such publications in a critical appraisal comparing them with the dominant literature accessed by most people who use the common generalist databases such as Web of Knowledge and Scopus.

<sup>1</sup> <http://bft.cirad.fr/>

<sup>2</sup> <http://www.cabdirect.org>

## Selection of articles

For critical appraisal we selected 19 articles from BFT, 99 from the overall body of English-language peer-reviewed publications plus 5 books and 4 reports from searches in Google Scholar. Articles that addressed logging roads in tropical forests were selected by their relevance for the disciplines ecology, engineering and geography. An overview of the selection criteria that were used for the screening of articles is given in table I. The term “logging road” is frequently used without further definition. We included only the articles reporting on roads that are built to allow wheeled vehicles to transport harvested logs from the landings, where they are loaded, out of the forest. We excluded roads constructed primarily for public use. The selection therefore includes primary (access) roads, which are mostly built for permanent use, as well as secondary (dead-end) roads, generally built for use over a limited time during a single timber harvesting operation. This definition excludes skid trails designed for use by tracked vehicles, which are narrower and thus often do not form a continuous opening of the canopy. Due to constraints of time and resources, the choice and application of selection criteria were not independently tested by a second person, hence their reproducibility might be limited.

The geographical focus of the articles differed between the two literatures. Whilst the French-language BFT papers were mostly focused on Francophone African countries, a majority of the English-language articles focused on tropical America, in particular the Amazon. Only half as many English-language articles focused on Asia and again fewer on Africa, with a few on tropical Australia (figure 3).

## Critical appraisal

### Technical advice for forest exploitation

The very first article in BFT that mentioned roads in Central African forests (Steinmann, 1948), was written with the connotation of adventure in exploring the forest as unknown territory in order to gain access to forest resources in the French colonies. Over the next few years the articles in BFT became very specific in giving technical advice for road planning, building and maintenance in order to ensure efficient logging operations. Detailed descriptions of machines used for construction, maintenance and transport were given (Tuffier, 1954; Le Ray, 1958) but also a wide range of recommendations for road engineering were presented and discussed. Of major importance here was the construction of roads adapted to the landscape, e.g. fitting a road into the terrain, contouring the shape of the road surface, implementing drainage systems and designing river crossings (Allouard, 1954a; Le Ray, 1956, 1960; Estève and Lepitre, 1972a). Decades later, and without making reference to these articles, several very similar ideas and recommendations were presented in a book in English on forest road operations in the tropics (Sessions, 2007), showing that most of these engineering principles introduced more than 60 years previously are still considered to be “good” practice. Early articles also considered the planning strategy of the overall road network and the optimization of the layout, with maps and schematic plans given as examples (Allouard, 1954b; Krzeszkiewicz, 1959; Le Ray, 1959). The average skidding

**Table I.**

Inclusion and exclusion criteria for articles to be considered for critical appraisal, listed in hierarchical order.

	Inclusion criteria	Exclusion criteria
Language	English, French (only in <i>Bois et Forêts des Tropiques</i> ).	Any other language, other journals in the French language.
Object	Roads and road networks	
Location	Pan-tropical (Central and South America, Africa, South-East Asia, Australia). Closed canopy tropical forests used for timber exploitation.	Non-tropical. Tree plantations after clearcutting, woodlands, savannas, wetlands.
Principal utilization	Wheeled vehicles transporting timber.	Skidding (log yarding), public transportation.
Type	Primary roads: permanently maintained, providing principal access to the forest. Secondary roads: mostly dead-end roads, connecting logging sites with primary roads, abandoned after use.	
Questions and applications	Forest engineering: layout, design, construction, maintenance, management. Ecology: interactions with wildlife and forest ecosystems, direct and indirect impacts, persistence, impact reduction. GIS and remote sensing: detection, characterization, spatial distribution.	Mention roads only as one of many factors in connection with forest degradation and deforestation. Logging impacts that are not directly linked with roads (e.g. timber species population and recruitment issues). Purely concerning economic and social development or land use policy.

distance of 1 km in Central Africa, which is the main variable that influences road spacing in the landscape, has not changed since then (*personal observation*). These articles were based on the primary objective of maximizing the number of trees that can be reached with the least effort and costs for road building. However, they also mentioned that these measures would help to reduce the extent of damage to the forest. For most subsequent articles on this subject, in other publications (e.g. Gullison and Hardner, 1993; Dykstra and Heinrich, 1996; Johns *et al.*, 1996; FAO and ATIBT, 1999; Picard *et al.*, 2006; Schulze and Zweede, 2006), the primary objective changed towards environmental impact reduction, but the recommended practices remained very similar.

### Direct impacts of roads on tropical forests

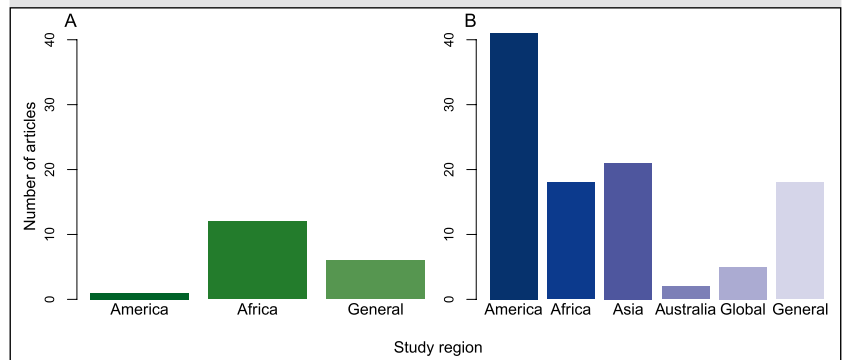
We found few detailed analyses of the ecological impacts of logging roads in articles published in BFT. Estève (1983) quantified the destruction of forest cover for logging-related infrastructure in Central Africa and South America and concluded that, with only 5% destruction, the ecological value of the forest remained largely unchanged. In an African logging concession, roads and log landing sites accounted for only 0.8% of the forest area (Durrieu de Madron *et al.*, 2000). However, the majority of the English-language articles published over the last 25 years give a strongly contrasting perspective, describing a variety of road-related threats to forest ecosystems with potentially detrimental effects to their ecological functioning at various scales. The amount of forest cover cleared (photo 1), and thus biomass lost, for road building has been raised as an issue in terms of local-scale impacts (Olander *et al.*, 1998; Gideon Neba *et al.*, 2014). However, strong regional differences are reported, with a notably high average value of 17% stand disturbance by roads and skid trails in Malaysia (Pinard *et al.*, 2000).

Even if only a small proportion of the forest cover is cleared for road building (as in most of Central Africa and Amazonia), negative effects might reach much further. Edge effects can lead to the death of big trees (Laurance *et al.*, 2000) and the desiccation of forests due to enhanced evapotranspiration in adjacent forest areas (Goosem, 2007; Briant *et al.*, 2010; Fraser, 2014; Kunert *et al.*, 2015). Together with large amounts of debris (left behind after clearing) as a potential fuel, roads can thus increase the vulnerability of the forest to fires (Uhl and Kauffman, 1990; Nepstad *et al.*, 2001).

Road construction drastically changes the forest habitat, not only by removing vegetation but also by altering soil functions through removal of top soil, application of external materials and heavy mechanical compaction (Donagh *et al.*, 2010). The most severe effect of soil exposure and compaction is often erosion (Malmer and Grip, 1990; Douglas,

2003), which in combination with heavy tropical rainfall can remain a problem for more than ten years after logging (Clarke and Walsh, 2006). This results in the loss of soil material on and around roads and the accumulation of sediment in streams and rivers (Gomi *et al.*, 2006; Ziegler *et al.*, 2007; Negishi *et al.*, 2008). Together with other hydrological impacts, e.g. damming of water courses through inadequately constructed river crossings, this can lead to serious deterioration of the ecosystem by changing the physical and chemical characteristics of the water (Trombulak and Frissell, 2000; Bruijnzeel, 2004; Connolly and Pearson, 2007). This can have a direct impact on local communities who depend on the ecosystem service of clean drinking water from streams (Mandle *et al.*, 2015). Many of these articles examining road-related impacts also present possible mitigation measures that we discuss in detail below.

Roads in forests directly interfere with animal populations through road kill (Laurance *et al.*, 2009; Clements *et al.*, 2014) but also by influencing their movement and behaviour (Chazdon *et al.*, 2009; Lees and Peres, 2009; Van Der Hoeven, 2010). Negative effects of roads have been shown on small mammals (Malcolm and Ray, 2000), birds (Develey and Stouffer, 2001; Laurance and Gomez, 2005), elephants (Blake *et al.*, 2008) and dung beetles (Hosaka *et al.*, 2014). This has been associated with habitat changes and human activity, but increased noise levels can also have an impact (Laurance, 2015). However, roadsides and abandoned roads can also attract animals due to higher abundance of herbs as food sources, as has been shown for gorillas (Matthews and Matthews, 2004). Puddles and ditches resulting from compacted soils on logging roads have been reported to be a suitable reproduction site for turtles (Ernst *et al.*, 2014). An overview of the varying effects of roads on different groups of species is given by Van Vliet and Nasi (2007) showing, for example, that elephants are more frequently found in proximity to roads and settlements, while certain wild ungulates show strong patterns of road avoidance.



**Figure 3.** Regional focus of articles (number of articles per continent, if applicable) selected for critical appraisal, comparing articles in *Bois et Forêt des Tropiques* journal (A) with the English language literature (B). Global = analyses carried out on a pantropical or global scale, General = general relevance without specific geographical reference.

### Indirect impacts of roads on tropical forests

Arguably the biggest threat resulting from logging roads in the tropics is that they grant access to the forest interior for other land uses. The presence of roads facilitates illegal and uncontrolled logging activities (Obidzinski *et al.*, 2007; Laurance and Balmford, 2013) and the probability of logged areas being deforested is highly dependent on distance from major roads (Asner *et al.*, 2006). This is mostly because logging roads are used successively for encroachment by farmers who colonize new areas for slash-and-burn agriculture (Johns *et al.*, 1996; Reid and Bowles, 1997; Mertens and Lambin, 2000; Pfaff *et al.*, 2007). However, this process varies depending on human population density, soil quality and topography (Cropper *et al.*, 1999), as well as market access and tenure regulations (Chomitz and Gray, 1996), and is often linked with official re-designation of roads for public use or even large-scale programs with incentives for colonization (Nepstad *et al.*, 2001; Barber *et al.*, 2014). With increasing disturbance intensity this can lead to feedback loops resulting in deforestation or severe degradation at larger scales (Laurance *et al.*, 2002; Malhi *et al.*, 2014).

In the absence of appropriate landscape planning, over the long-term some roads initially built for logging have developed into major public roads and can even be linked with the conversion to large-scale agro-industrial agriculture and pastoralism. This has been reported for Latin America and South-East Asia for cattle grazing, soy-bean production and oil-palm plantations (Reid and Bowles, 1997; Fearnside, 2007; Laurance and Balmford, 2013). However, the reason why logged forests become vulnerable to such conversions can only indirectly be attributed to the presence of roads. It is more linked with the loss of short-term economic value and a widespread underestimation of the ecological importance of production forests (Gaveau *et al.*, 2013; Edwards *et al.*, 2014).

A less visible form of forest degradation resulting from roads is the depletion of wildlife populations through unregulated hunting that has even resulted in “empty” forests (Redford, 1992; Robinson *et al.*, 1999; Laurance *et al.*, 2006; Poulsen *et al.*, 2011). In Central Africa especially, bushmeat provides the most important source of protein for most forest-dependent communities, making hunting an essential activity for human nutrition that has been practiced for a long time (photo 2). However, the presence of extensive road networks has led to a process of specialization of market hunters linked to a longer transport chain and increased quantities of extracted bushmeat being supplied to meet the increasing demand in urbanized areas further away from the forest (Wilkie *et al.*, 1992, 2000; Nasi *et al.*, 2008). Even logging vehicles are frequently used to transport hunters, weapons and game, thus increasing the radius of defaunation around settlements deeper into the forest (Poulsen *et al.*, 2009).

Roads can also facilitate biological invasions in tropical forests. Dispersal by trucks and other logging vehicles has been shown to be the main driver for the spread of exotic tree (Padmanaba and Sheil, 2014), ant (Walsh *et al.*, 2004) and grass (Veldman and Putz, 2010) species.

### Reducing the impacts of logging roads

The potential problems with roads in tropical forests have long been appreciated from a forest management perspective (as evidenced in the BFT articles reviewed above) and so there has been a parallel set of publications focused on the development of engineering techniques designed to minimise these problems. These are well represented in both the French- and English-language literatures (table II).

Improved road planning, construction and maintenance has been a central element in the development of reduced-impact logging (RIL) guidelines (Pinard *et al.*, 1995) and in the FAO model code of forest harvesting practice (Dykstra and Heinrich, 1996). Effective road planning in order to reduce residual stand damage and loss of biomass, as described in BFT in the 1950s, was included as a key component of RIL (Putz *et al.*, 2008). Another important recommendation is to reduce the clearing width of road corridors (Sist, 2000). Especially in Central Africa, there is still a widespread belief among forest managers that forest clearing on both sides of the road is necessary to let the sun dry the road surface (Sessions, 2007). However, it has already been emphasized by Allouard (1954b) that a well-maintained and drained road does not require a wide open canopy. Also, the need to build roads fitted to the topography in order to avoid soil erosion on the road surface (Negishi *et al.*, 2008) has long been articulated (Le Ray, 1956).



**Photo 2.**  
Hunted duiker along a logging road in Cameroon.  
Photo F. Kleinschroth.

**Table II.**

Logging-road-related environmental problems and measures to mitigate such impacts. Each measure is only listed once, although it could also be useful in the context of other problems. A selection of the most relevant references is given for each measure.

Road-related environmental problems	Measures to reduce impacts	References
Forest clearing for road construction (carbon emissions, loss of habitat)	<p>Minimize road length by optimizing the layout (to reach the resource via the shortest path)</p> <p>Minimize road length by finding the optimal ratio between lengths of roads and skid trails</p> <p>No road construction in high conservation-value areas</p> <p>Allow changes in road alignment to avoid large trees</p>	<p>Le Ray, 1959; Gullison and Hardner, 1993; Johns <i>et al.</i>, 1996; Picard <i>et al.</i>, 2006; Schulze and Zweede, 2006</p> <p>Krzeszkiewicz, 1959; Dykstra and Heinrich, 1996; Sessions, 2007</p> <p>Sist <i>et al.</i>, 1998; Healey <i>et al.</i>, 2000; Durrieu de Madron <i>et al.</i>, 2011</p> <p>Le Ray, 1959; Sessions, 2007</p>
Edge effects: desiccation, wind exposure, death of large trees	Reduce the width of forest clearing for road construction (on average 10 m, taking solar angle and exposure to wind into account)	Allouard, 1954b; Dykstra and Heinrich, 1996; Sist, 2000; Laurance and Gomez, 2005; Feldpausch <i>et al.</i> , 2005; Laurance <i>et al.</i> , 2009
Soil erosion (and the deterioration of water quality through sedimentation)	<p>Adapt road routing to the topography (location on top of ridges and across slopes)</p> <p>Limit the road gradient and the length of downhill runs</p> <p>Ensure drainage through road camber, roadside ditches and cross-drains</p> <p>Stabilize the road surface with laterite</p> <p>Fitting road alignment to the terrain and good engineering practice to protect slopes (e.g. minimise high risk excavations of side slopes, and stabilise excavations where they cannot be avoided)</p>	<p>Allouard, 1954a; Le Ray, 1956; Estève and Lepitre, 1972b; Pinard <i>et al.</i>, 1995; Dykstra and Heinrich, 1996</p> <p>Allouard, 1954b; Le Ray, 1956; Sessions, 2007; Ziegler <i>et al.</i>, 2007; Negishi <i>et al.</i>, 2008</p> <p>Allouard, 1954b; Le Ray, 1956; Dykstra and Heinrich, 1996; Sist <i>et al.</i>, 1998; Sessions, 2007; Putz <i>et al.</i>, 2008</p> <p>Allouard, 1954a; Sessions, 2007</p> <p>Allouard, 1954a; Le Ray, 1956; Dykstra and Heinrich, 1996; Sessions, 2007</p>
Physical alteration of streams	<p>Limit amount of stream crossings</p> <p>Apply good engineering practice in building culverts, bridges and fords</p> <p>Place buffer zones around streams and wetlands</p>	<p>Le Ray, 1959; Clarke and Walsh, 2006</p> <p>Allouard, 1954a; Douglas, 2003; Sessions, 2007</p> <p>Pinard <i>et al.</i>, 1995; Sist <i>et al.</i>, 1998; Applegate <i>et al.</i>, 2004</p>
Road kill and behaviour change of animals	<p>Set and control speed limits</p> <p>Ensure overhead canopy connections (green bridges)</p> <p>Set up road crossing infrastructure (signs, speed bumps, bridges, culverts)</p> <p>Respect habitats of endangered species in road planning</p> <p>Limit number and weight of logging vehicles</p> <p>Adapt roadside vegetation to animal preferences</p>	<p>Allouard, 1954b; Laurance <i>et al.</i>, 2006, 2009; Sessions, 2007</p> <p>Goosem, 2007; Sessions, 2007</p> <p>Laurance <i>et al.</i>, 2009; Clements <i>et al.</i>, 2014</p> <p>van Vliet and Nasi, 2007; Clements <i>et al.</i>, 2014</p> <p>Allouard, 1954b; Sessions, 2007</p> <p>Hoeven, 2010</p>
Facilitation of hunting	<p>Control access to currently used roads</p> <p>Close secondary roads after harvest with physical barriers and removal of stream crossings</p> <p>Prohibit the transport of hunters and bushmeat in logging vehicles</p>	<p>Mason and Putz, 2001; van Vliet and Nasi, 2007; Edwards <i>et al.</i>, 2014b</p> <p>Sist <i>et al.</i>, 1998; Applegate <i>et al.</i>, 2004; van Vliet and Nasi, 2007; Bicknell <i>et al.</i>, 2015a</p> <p>Robinson <i>et al.</i>, 1999; Wilkie <i>et al.</i>, 2000; Poulsen <i>et al.</i>, 2009</p>
Agricultural colonization	Plan and regulate land-uses, provide alternatives for settlers	Dykstra and Heinrich, 1996; Chomitz and Gray, 1996; Mertens and Lambin, 2000; Laurance <i>et al.</i> , 2014



With a stronger focus on biodiversity conservation, the set of impact-reduction measures has recently been augmented. This includes the declaration of set-asides from logging in high conservation-value areas as well as measures to reduce the fragmenting effect of roads on animal habitats (Goosem, 2007; Clements *et al.*, 2014). Given the problems with hunting and encroachment, control of access has been identified as a crucial aspect of road management. This requires guarded barriers at strategic points in the permanent road network but also the closure of roads after harvest (Mason and Putz, 2001; Applegate *et al.*, 2004; Bicknell *et al.*, 2015). However, wherever local communities do not accept such measures, it becomes difficult for logging operators to enforce them (photo 3).

Since RIL standards have been published, numerous studies have been carried out comparing the effectiveness of RIL with that of conventional logging, generally emphasizing the usefulness of such measures including road building standards (Healey *et al.*, 2000; Pereira *et al.*, 2002; Feldpausch *et al.*, 2005; Ezzine de Blas and Ruiz Pérez, 2008; Medjibe and Putz, 2012).

Forest regeneration after exploitation is of crucial importance for sustainable forest management (Karsenty and Gourlet-Fleury, 2006; Zimmermann and Kormos, 2012). Given that most secondary logging roads are only temporarily used, they do provide a potential site for tree regeneration after abandonment (photo 4). However, especially in areas where high volumes of timber are harvested such as the dipterocarp forests of South-East Asia, reduced levels of regeneration have been reported on abandoned roads and skid trails due to unfavourable soil conditions (Pinard *et al.*, 1996, 2000; Zang and Ding, 2009). Also, in more urbanized areas, lower levels of forest recovery have been recorded with proximity to roads (Crk *et al.*, 2009). In contrast, for regions with low intensity logging regimes, logging roads and strip clear cuts have been associated with enhanced levels of regeneration of light-demanding timber species (Hartshorn, 1989; Fredericksen and Mostacedo, 2000; Nabe-Nielsen *et al.*, 2007; Swaine and Agyeman, 2008). Road edges, those areas that have been cleared during road construction to let the sun dry the surface, are particularly suitable microhabitats for recruitment of timber species (Guariguata and Dupuy, 1997; Doucet, 2004).

### Characterizing the spatial distribution and coverage of logging roads

Highly selective logging at low densities, as occurs in most of Central Africa and Amazonia, is a form of cryptic disturbance which, in contrast to full deforestation, can only be detected marginally or not at all with conventional remote sensing techniques on larger scales (Peres *et al.*, 2006). Due to their linearity and connectedness, roads are the only components of such logging activities that are detectable on medium- to high-resolution satellite images. Articles in BFT were among the first to make use of this finding and suggested the use of logging roads as indicators of the extent of logging disturbance in tropical forests (Gond *et al.*, 2003; Mayaux *et al.*, 2003; Bourbier *et al.*, 2013). Despite some

technical drawbacks (De Wasseige and Defourny, 2004), it is now the *de facto* standard across all tropical regions to use roads as indicators for human dominance of tropical forests (Asner *et al.*, 2004a, 2004b, 2009; Souza *et al.*, 2005; Laporte *et al.*, 2007; Hirschmugl *et al.*, 2014; Gaveau *et al.*, 2014). The spatial distribution, i.e. the extent and density, of road networks can be used to model human influences on tropical forests at larger scales (Mertens *et al.*, 2001; Arima *et al.*, 2008; Bell *et al.*, 2012; Ahmed *et al.*, 2013b, 2013a, 2014). It also served as an important input to define the intactness of forest landscapes (Potapov *et al.*, 2008) and the identification of priority road-free areas at a global scale (Laurance *et al.*, 2014).



**Photo 3.**

Attempts to control access to the logging road network in a forest concession in Cameroon. a: guarded barrier at the forest edge. b: logs placed on a secondary road after harvest to block the access have been burned by hunters to gain access by motorcycle.

Photos F. Kleinschroth.



**Photo 4.**  
Abandoned logging roads, closed with a log to block access one year after exploitation in south east Cameroon (a) and with dense herb cover and regenerating trees 14 years after abandonment in northern Republic of Congo (b).  
Photos F. Kleinschroth.

## Contrasting trends in the literature

Assessment of the literature included in this review reveals two main underlying agendas for these studies that can be roughly classified into conservation approaches *versus* forest management approaches. Dominant parts of the recent literature found in the generalist databases Web of Knowledge and Scopus are focussed on the negative impacts of industrial-type logging and reinforce the long-standing bad reputation of export-driven timber harvesting in tropical countries (Bowles *et al.*, 1998). Only recently, because of the overwhelming occurrence of logging in tropical forests, have publications started to address the ecological value of logged forests that shows the need for them to be protected from further conversion into oil-palm plantations or other agricultural land (e.g. Edwards *et al.*, 2011). Conversely, almost all the reviewed articles in BFT adopted a much more pragmatic approach, without openly expressing any doubts about the continuation of logging activities. The history of BFT cannot be disentangled from French colonial history and its' founding institution, the Centre Technique Forestier Tropical (CTFT). The initial colonial motivation of efficiently organizing forest exploitation in overseas forests was later translated into development cooperation (Bonneuil and Kleiche, 1993). However, no change occurred in the adherence to the traditional principles of sustainable forestry and the aim to promote this in collaboration with a range of stakeholders in the field. Irrespective of the motivations behind the historical literature, it contains a high standard of engineering recommendations and the resulting practices mostly persist to the present day. Knowledge of this historical legacy from the literature is crucial in understanding the development of today's logging practices. Lessons learned in the 1950s should not be forgotten, but rather fed into modern evaluation and improvement of logging activities.

## Identification of knowledge gaps

We have reviewed a large body of literature about logging roads in tropical forests, mostly focussing on immediate direct and indirect environmental impacts and on management techniques designed to mitigate these. However, given the history of more than half a century of industrial-scale logging operations it is somewhat surprising that the long-term fate of logging road networks remains unknown, with insufficient attention paid to road abandonment and subsequent forest recovery. This may be linked to the fact that large formerly-logged areas in Latin America and South East Asia are now deforested. However, in Central Africa this is not the case. Here, only a small proportion of the logging road networks is maintained in a constantly open state due to the costs and the obligation for many forest concessions to close secondary roads after exploitation. Little is known about the persistence of road networks in the overall forest landscape or about the long-term successional trajectory on abandoned forest roads, especially in Central Africa. Such long-term characterization of forest road networks can help in the development of much needed strategies for post-logging silviculture and should be taken into account when determining forest degradation based on road networks, for example in the context of the REDD+ programme (reducing emissions from deforestation and forest degradation). We feel that current definitions of intactness or roadlessness of forest landscapes do not do justice to the complexity of the interactions between roads and forests when they are simply based on the application of a fixed buffer distance around all roads. A new understanding of the temporal and spatial dynamics of forest road networks is urgently needed for initiatives that try to reconcile forest certification with the protection of intact forest landscapes. The long-term management of road networks should provide a crucial step towards the anticipated goal of supra-regional landscape planning across the tropics (Lewis *et al.*, 2015).

### Acknowledgements

This study was funded by the European Commission under the Erasmus Mundus Joint Doctorate Programme FONASO. We thank Francis E. "Jack" Putz and an anonymous reviewer for helpful comments on the manuscript.

## Bibliographical References

- Ahmed S. E., Ewers R. M., Smith M. J., 2013a. Large scale spatio-temporal patterns of road development in the Amazon rainforest. *Environmental Conservation*, 41 (3): 253-264.
- Ahmed S. E., Lees A. C., Moura N. G., Gardner T. A., Barlow J., Ferreira J., *et al.*, 2014. Road networks predict human influence on Amazonian bird communities. *Proceedings of the Royal Society B*, 281: 20141742.
- Ahmed S. E., Souza C. M., Riberio J., Ewers R. M., 2013b. Temporal patterns of road network development in the Brazilian Amazon. *Regional Environmental Change*, 13 (5): 927-937.
- Allouard P., 1954b. La route forestière en pays tropical (1<sup>re</sup> partie). *Bois et Forêts des Tropiques*, 33: 15-36. [http://bft.cirad.fr/cd/BFT\\_033\\_15-36.pdf](http://bft.cirad.fr/cd/BFT_033_15-36.pdf)
- Allouard P., 1954a. La route forestière en pays tropical (2<sup>e</sup> partie). *Bois et Forêts des Tropiques*, 34: 29-44. [http://bft.cirad.fr/cd/BFT\\_034\\_29-44.pdf](http://bft.cirad.fr/cd/BFT_034_29-44.pdf)
- Applegate G., Putz F. E., Snook L. K., 2004. Who pays for and who benefits from improved timber harvesting practices in the tropics? Lessons learned and information gaps. *Who Pays for and Who Benefits from Improved Timber Harvesting Practices in the Tropics? Lessons Learned and Information Gaps*. CIFOR, Bogor, Indonesia, 35 p.
- Arima E. Y., Walker R. T., Sales M., Souza C., Perz S. G., 2008. The fragmentation of space in the Amazon Basin: emergent road networks. *Photogrammetric Engineering & Remote Sensing*, 74 (6): 699-709.
- Asner G. P., Broadbent E. N., Oliveira P. J. C., Keller M., Knapp D. E., Silva J. N. M., 2006. Condition and fate of logged forests in the Brazilian Amazon. *Proceedings of the National Academy of Sciences of the United States of America*, 103 (34): 12947-12950.
- Asner G. P., Keller M., Pereira J., Zweede J. C., Silva J. N. M., 2004a. Canopy damage and recovery after selective logging in Amazonia: Field and satellite studies. *Ecological Applications*, 14 (4): 280-298.
- Asner G. P., Keller M., Silva J. N. M., 2004b. Spatial and temporal dynamics of forest canopy gaps following selective logging in the eastern Amazon. *Global Change Biology*, 10 (5): 765-783.
- Asner G. P., Rudel T. K., Aide T. M., Defries R., Emerson R., 2009. A contemporary assessment of change in humid tropical forests. *Conservation Biology*, 23 (6): 1386-1395.
- Barber C. P., Cochrane M. A., Souza C. M., Laurance W. F., 2014. Roads, deforestation, and the mitigating effect of protected areas in the Amazon. *Biological Conservation*, 177: 203-209.
- Bell A. R., Riolo R. L., Doremus J. M., Brown D. G., Lyon T. P., Vandermeer J., *et al.*, 2012. Fragmenting forests: the double edge of effective forest monitoring. *Environmental Science & Policy*, 16: 20-30.
- Bicknell J. E., Gaveau D. L. A., Davis Z. G., Struebig M. J., 2015. Saving logged tropical forests: closing roads will bring immediate benefits. *Frontiers in Ecology and the Environment*, 13 (2): 73-74.
- Blake S., Deem S. L., Strindberg S., Maisels F., Momont L., Isia I.-B., *et al.*, 2008. Roadless wilderness area determines forest elephant movements in the Congo Basin. *PLoS ONE*, 3 (10): e3546.
- Blaser J., Sarre A., Poore D., Johnson S., 2011. Status of tropical forest management 2011. *Management*. ITTO Techn. International Tropical Timber Organization, Yokohama, Japan, 418 p.
- Bonneuil C., Kleiche M., 1993. Du jardin d'essais colonial à la station expérimentale 1880-1930. *Éléments pour une histoire du Cirad*. Cirad, Paris, 108 p.
- Bourbier L., Cornu G., Pennec A., Brognoli C., Gond V., 2013. Large-scale estimation of forest canopy opening using remote sensing in Central Africa. *Bois et Forêts des Tropiques*, 315 (1): 3-9. [http://bft.cirad.fr/cd/BFT\\_315\\_3-9.pdf](http://bft.cirad.fr/cd/BFT_315_3-9.pdf)
- Bowles I. A., Rice R. E., Mittermeier R. A., Da Fonseca G. A. B., 1998. Logging and tropical forest conservation. *Science*, 280 (5371): 1899-1900.
- Brandão A. O., Souza C. M., 2006. Mapping unofficial roads with Landsat images: a new tool to improve the monitoring of the Brazilian Amazon rainforest. *International Journal of Remote Sensing*, 27 (1): 177-189.
- Briant G., Gond V., Laurance S. G. W., 2010. Habitat fragmentation and the desiccation of forest canopies: A case study from Eastern Amazonia. *Biological Conservation*, 143 (11): 2763-2769.
- Bruijnzeel L. A., 2004. Hydrological functions of tropical forests: not seeing the soil for the trees? *Agriculture, Ecosystems & Environment*, 104 (1): 185-228.
- Chazdon R., Harvey C., Komar O., Griffith D., Ferguson B., Martínez-Ramos M., *et al.*, 2009. Beyond reserves: A research agenda for conserving biodiversity in human-modified tropical landscapes. *Biotropica*, 41 (2): 142-153.
- Chomitz K. M., Gray D. A., 1996. Roads, land use, and deforestation: a spatial model applied to Belize. *The World Bank Economic Review*, 10 (3): 487-512.
- Clarke M. A., Walsh R. P. D., 2006. Long-term erosion and surface roughness change of rain-forest terrain following selective logging, Danum Valley, Sabah, Malaysia. *Catena*, 68 (2-3): 109-123.
- Clements G. R., Lynam A. J., Gaveau D., Yap W. L., Lhota S., Goosem M., *et al.*, 2014. Where and how are roads endangering mammals in Southeast Asia's forests? *PLoS ONE*, 9 (12): e115376.
- Connolly N. M., Pearson R. G., 2007. The effect of fine sedimentation on tropical stream macroinvertebrate assemblages: A comparison using flow-through artificial stream channels and recirculating mesocosms. *Hydrobiologia*, 592 (1): 423-438.
- Crk T., Uriarte M., Corsi F., Flynn D., 2009. Forest recovery in a tropical landscape: what is the relative importance of biophysical, socioeconomic, and landscape variables? *Landscape Ecology*, 24 (5): 629-642. DOI 10.1007/s10980-009-9338-8
- Cropper M., Griffiths C., Mani M., 1999. Roads, population pressure, and deforestation in Thailand, 1976 - 89. *Land Economics*, 75 (1): 58-73.
- Develey P. F., Stouffer P. C., 2001. Effects of roads on movements by understory birds in mixed-species flocks in central Amazonian Brazil. *Conservation Biology*, 15 (5): 1416-1422.
- Donagh P. Mac, Rivero L., Garibaldi J., Alvez M., Cortez P., 2010. Effects of selective harvesting on traffic pattern and soil compaction in a subtropical forest in Guarani, Misiones, Argentine. *Scientia Forestalis*, 2472 (3384): 115-124.
- Doucet J., 2004. Comment assister la régénération naturelle de l'okoumé dans les concessions forestières ? *Bois et Forêts des Tropiques*, 279 (1) : 59-72. [http://bft.cirad.fr/cd/BFT\\_279\\_59-72.pdf](http://bft.cirad.fr/cd/BFT_279_59-72.pdf)
- Douglas I. A. N., 2003. Predicting road erosion rates in selectively logged tropical rain forests. *Erosion prediction in ungauged basins: integrating methods and techniques*. Eds de Boer, D, Froehlich, W., Mizuyama, T., and Pietroniro, A. IAHS Press, Wallingford, UK, p. 199-205..

- Durrieu de Madron L., Bauwens S., Giraud A., Hubert D., Billand A., 2011. Estimation de l'impact de différents modes d'exploitation forestière sur les stocks de carbone en Afrique centrale. *Bois et Forêts des tropiques*, 308 (2): 75-86. [http://bft.cirad.fr/cd/BFT\\_308\\_75-86.pdf](http://bft.cirad.fr/cd/BFT_308_75-86.pdf)
- Durrieu de Madron L., Fontez B., Dipapoundji B., 2000. Dégâts d'exploitation et de débardage en fonction de l'intensité d'exploitation en forêt dense humide d'Afrique Centrale. *Bois et Forêts des Tropiques*, 264 (2): 57-60. [http://bft.cirad.fr/cd/BFT\\_264\\_57-60.pdf](http://bft.cirad.fr/cd/BFT_264_57-60.pdf)
- Dykstra D. P., Heinrich R., 1996. FAO model code of forest harvesting practice. FAO, Rome, 89 p.
- Edwards D. P., Larsen T. H., Docherty T. D. S., Ansell F. A., Hsu W. W., Derhé M. A., *et al.*, 2011. Degraded lands worth protecting: the biological importance of Southeast Asia's repeatedly logged forests. *Philosophical Transactions of the Royal Society Biological Sciences*, 278 (1702): 82-90.
- Edwards D. P., Laurance W. F., 2013. Biodiversity despite selective logging. *Science*, 339 (6): 646-647.
- Edwards D. P., Tobias J. A., Sheil D., Meijaard E., Laurance W. F., 2014. Maintaining ecosystem function and services in logged tropical forests. *Trends in Ecology & Evolution*, 29 (9): 511-520.
- Ernst R., Böhm S., Hölting M., Konrad T., 2014. Whipped cream cravings in the rainforest: predation of foam nests of *Physalaemus ephippifer* (Anura: Leptodactylidae) by *Platemys platycephala* (Testudines: Chelidae) in central Guyana. *Salamandra*, 50 (1): 57-62.
- Estève J., 1983. La destruction du couvert forestier consécutive à l'exploitation forestière de bois d'œuvre en forêt dense tropicale humide africaine ou américaine. *Bois et Forêts des Tropiques*, 201: 77-84. [http://bft.cirad.fr/cd/BFT\\_201\\_77-84.pdf](http://bft.cirad.fr/cd/BFT_201_77-84.pdf)
- Estève J., Lepitre C., 1972a. Construction et coût des routes forestières en forêt dense tropicale. *Bois et Forêts des Tropiques*, 144: 33-53. [http://bft.cirad.fr/cd/BFT\\_144\\_33-53.pdf](http://bft.cirad.fr/cd/BFT_144_33-53.pdf)
- Estève J., Lepitre C., 1972b. Construction et coût des routes forestières en forêt dense tropicale. *Bois et Forêts des Tropiques*, 145: 49-74. [http://bft.cirad.fr/cd/BFT\\_145\\_49-74.pdf](http://bft.cirad.fr/cd/BFT_145_49-74.pdf)
- Ezzine de Blas D., Ruiz Pérez M., 2008. Prospects for reduced impact logging in Central African logging concessions. *Forest Ecology and Management*, 256 (7): 1509-1516.
- FAO, ATIBT, 1999. Infrastructures routières dans les forêts tropicales : voies de développement ou voies de destruction ? Food and Agriculture Organization (FAO), Rome, 68 p.
- Fearnside P. M., 2007. Brazil's Cuiabá-Santarém (BR-163) highway: The environmental cost of paving a soybean corridor through the Amazon. *Environmental Management*, 39 (5): 601-614.
- Feldpausch T. R., Jirka S., Passos C. A. M., Jasper F., Riha S. J., 2005. When big trees fall: Damage and carbon export by reduced impact logging in southern Amazonia. *Forest Ecology and Management*, 219 (2-3): 199-215.
- Fraser B., 2014. Carving up the Amazon. *Nature*, 509 (7501): 418-419.
- Fredericksen T. S., Mostacedo B., 2000. Regeneration of timber species following selection logging in a Bolivian tropical dry forest. *Forest Ecology and Management*, 131 (1-3): 47-55.
- Gaveau D. L. A., Kshatriya M., Sheil D., Sloan S., Molidena E., Wijaya A., *et al.*, 2013. Reconciling Forest Conservation and Logging in Indonesian Borneo. *PLoS ONE*, 8 (8): e69887.
- Gaveau D. L. A., Sloan S., Molidena E., Yaen H., Sheil D., Abram N. K., *et al.*, 2014. Four decades of forest persistence, clearance and logging on Borneo. *PLoS ONE*, 9 (7): e101654.
- Gideon Neba S., Kanninen M., Eba'a Atyi R., Sonwa D. J., 2014. Assessment and prediction of above-ground biomass in selectively logged forest concessions using field measurements and remote sensing data: Case study in South East Cameroon. *Forest Ecology and Management*, 329: 177-185.
- Gomi T., Sidle R. C., Noguchi S., Negishi J. N., Nik A. R., Sasaki S., 2006. Sediment and wood accumulations in humid tropical headwater streams: Effects of logging and riparian buffers. *Forest Ecology and Management*, 224 (1-2): 166-175.
- Gond V., Féau C., Pain-Orcet M., 2003. Télédétection et aménagement forestier tropical: les pistes d'exploitation. *Bois et Forêts des Tropiques*, 275 (1): 29-36. [http://bft.cirad.fr/cd/BFT\\_275\\_29-36.pdf](http://bft.cirad.fr/cd/BFT_275_29-36.pdf)
- Goosem M., 2007. Fragmentation impacts caused by roads through rainforests. *Current Science*, 93 (11): 1587-1595.
- Guariguata M. R., Dupuy J. M., 1997. Forest regeneration in abandoned logging roads in lowland Costa Rica. *Biotropica*, 29 (1): 15-28.
- Gullison R. E., Hardner J. J., 1993. The effects of road design and harvest intensity on forest damage caused by selective logging: empirical results and a simulation model from the Bosque Chimanes, Bolivia. *Forest Ecology and Management*, 59 (1-2): 1-14.
- Hartshorn G. S., 1989. Application of gap theory to tropical forest management: natural regeneration on strip clear-cuts in the Peruvian Amazon. *Ecology*, 70 (3): 567-576.
- Healey J. R., Price C., Tay J., 2000. The cost of carbon retention by reduced impact logging. *Forest Ecology and Management*, 139 (8): 237-255.
- Hirschmugl M., Steinegger M., Gallaun H., Schardt M., 2014. Mapping forest degradation due to selective logging by means of time series analysis: Case studies in Central Africa. *Remote Sensing*, 6 (1): 756-775.
- Van Der Hoeven C., 2010. Roadside conditions as predictor for wildlife crossing probability in a Central African rainforest. *African Journal of Ecology*, 48 (2): 368-377.
- Holmes T. P., Blate G. M., Zweede J. C., Pereira R., Barreto P., Boltz F., *et al.*, 2002. Financial and ecological indicators of reduced impact logging performance in the eastern Amazon. *Forest Ecology and Management*, 163 (1-3): 93-110.
- Hosaka T., Niino M., Kon M., Ochi T., Yamada T., Fletcher C., *et al.*, 2014. Effects of logging road networks on the ecological functions of dung beetles in Peninsular Malaysia. *Forest Ecology and Management*, 326: 18-24.
- Johns J. S., Barreto P., Uhl C., 1996. Logging damage during planned and unplanned logging operations in the eastern Amazon. *Forest Ecology and Management*, 89 (1-3): 59-77.
- Karsenty A., Gourlet-Fleury S., 2006. Assessing sustainability of logging practices in the Congo Basin's managed forests: the issue of commercial species recovery. *Ecology and Society*, 11 (1): 26.
- Krzyszkievicz S., 1959. Quelques observations sur l'organisation de l'exploitation forestière en pays tropical. *Bois et Forêts des Tropiques*, 66: 29-40. [http://bft.cirad.fr/cd/BFT\\_066\\_29-40.pdf](http://bft.cirad.fr/cd/BFT_066_29-40.pdf)
- Kunert N., Aparecido L. M. T., Higuchi N., Santos J. dos, Trumbore S., 2015. Higher tree transpiration due to road-associated edge effects in a tropical moist lowland forest. *Agricultural and Forest Meteorology*, 213: 183-192.
- Laporte N. T., Stabach J. A., Grosch R., Lin T. S., Goetz S. J., 2007. Expansion of industrial logging in Central Africa. *Science*, 316 (5830): 1451.
- Laurance S. G. W., Gomez M. S., 2005. Clearing width and movements of understory rainforest birds. *Biotropica*, 37 (1): 149-152.

- Laurance W. F., 2015. Wildlife struggle in an increasingly noisy world. *Proceedings of the National Academy of Sciences*, 112 (39): 11995-11996.
- Laurance W. F., 2000. Rainforest fragmentation kills big trees. *Nature*, 404: 836.
- Laurance W. F., Albernaz A. K. M., Schroth G., Fearnside P. M., Bergen S., Venticinque E. M., *et al.*, 2002. Predictors of deforestation in the Brazilian Amazon. *Journal of Biogeography*, 29 (5-6): 737-748.
- Laurance W. F., Balmford A., 2013. A global map for road building. *Nature*, 495 (7441): 308-309.
- Laurance W. F., Clements G. R., Sloan S., O'Connell C. S., Mueller N. D., Goosem M., *et al.*, 2014. A global strategy for road building. *Nature*, 513: 229-232.
- Laurance W. F., Croes B. M., Tchignoumba L., Lahm S. A., Alonso A., Lee M. E., *et al.*, 2006. Impacts of roads and hunting on Central African rainforest mammals. *Conservation Biology*, 20 (4): 1251-1261.
- Laurance W. F., Goosem M., Laurance S. G. W., 2009. Impacts of roads and linear clearings on tropical forests. *Trends in Ecology & Evolution*, 24 (12): 659-669.
- Lees A. C., Peres C. A., 2009. Gap-crossing movements predict species occupancy in Amazonian forest fragments. *Oikos*, 118 (2): 280-290.
- Le Ray J., 1956. Les routes forestières de la Société Nationale du Cameroun. *Bois et Forêts des Tropiques*, 50: 35-48. [http://bft.cirad.fr/cd/BFT\\_050\\_35-48.pdf](http://bft.cirad.fr/cd/BFT_050_35-48.pdf)
- Le Ray J., 1958. Le retour à vide des grumiers. *Bois et Forêts des Tropiques*, 59: 37-42. [http://bft.cirad.fr/cd/BFT\\_059\\_37-42.pdf](http://bft.cirad.fr/cd/BFT_059_37-42.pdf)
- Le Ray J., 1959. Le tracé des routes d'exploitation forestière. *Bois et Forêts des Tropiques*, 63: 25-47. [http://bft.cirad.fr/cd/BFT\\_063\\_25-47.pdf](http://bft.cirad.fr/cd/BFT_063_25-47.pdf)
- Le Ray J., 1960. L'entretien courant des routes en terre et la lutte contre la tôle ondulée. *Bois et Forêts des Tropiques*, 70: 49-56. [http://bft.cirad.fr/cd/BFT\\_070\\_49-56.pdf](http://bft.cirad.fr/cd/BFT_070_49-56.pdf)
- Lewis S. L., Edwards D. P., Galbraith D., 2015. Increasing human dominance of tropical forests. *Science*, 349 (6250): 19-73.
- Malcolm J. R., Ray J. C., 2000. Influence of timber extraction routes on central african small-mammal communities, forest structure, and tree diversity. *Conservation Biology*, 14 (6): 1623-1638.
- Malhi Y., Gardner T. A., Goldsmith G. R., Silman M. R., Zelazowski P., 2014. Tropical Forests in the Anthropocene. *Annual Review of Environment and Resources*, 39 (1): 125-159.
- Malmer A., Grip H., 1990. Soil disturbance and loss of infiltrability caused by mechanized and manual extraction of tropical rainforest in Sabah, Malaysia. *Forest Ecology and Management*, 38: 1-12.
- Mandle L., Tallis H., Sotomayor L., Vogl A. L., 2015. Who loses? Tracking ecosystem service redistribution from road development and mitigation in the Peruvian Amazon. *Frontiers in Ecology and the Environment*, 13 (6): 309-315.
- Mason D. J., Putz F. E., 2001. Reducing the impacts of tropical forestry on wildlife. *In*: R. A. Fimbel, A. Grajal, J. G. Robinson (eds). *The cutting edge: conserving wildlife in logged tropical forest*. Columbia University Press.
- Matthews A., Matthews A., 2004. Survey of gorillas (*Gorilla gorilla gorilla*) and chimpanzees (*Pan troglodytes troglodytes*) in Southwestern Cameroon. *Primates*, 45 (1): 15-24.
- Mayaux P., Gond V., Massart M., Pain-Orcet M., Achard F., 2003. Évolution du couvert forestier du bassin du Congo mesurée par télédétection spatiale. *Bois et Forêts des Tropiques*, 277 (3): 45-52. [http://bft.cirad.fr/cd/BFT\\_277\\_45-52.pdf](http://bft.cirad.fr/cd/BFT_277_45-52.pdf)
- Medjibe V. P., Putz F. E., 2012. Cost comparisons of reduced-impact and conventional logging in the tropics. *Journal of Forest Economics*, 18 (3): 242-256.
- Mertens B., Forni E., Lambin E., 2001. Prediction of the impact of logging activities on forest cover: A case-study in the East province of Cameroon. *Journal of Environmental Management*, 62 (1): 21-36.
- Mertens B., Lambin E. F., 2000. Land-cover change trajectories in southern Cameroon. *Annals of the Association of American Geographers*, 90 (3): 467-494.
- Nabe-Nielsen J., Severiche W., Fredericksen T., Nabe-Nielsen L., 2007. Timber tree regeneration along abandoned logging roads in a tropical Bolivian forest. *New Forests*, 34 (1): 31-40.
- Nasi R., Brown D., Wilkie D., Bennett E., Tutin C., Van Tol G., *et al.*, 2008. Conservation and use of wildlife-based resources: the bushmeat crisis. Technical Series 33. Secretariat of the Convention on Biological Diversity, Montreal, 50 p.
- Negishi J. N., Sidle R. C., Ziegler A. D., Noguchi S., Nik A. R., 2008. Contribution of intercepted subsurface flow to road runoff and sediment transport in a logging-disturbed tropical catchment. *Earth Surface Processes and Landforms*, 1191 (10): 1174-1191.
- Nepstad D., Carvalho G., Barros A. C., Alencar A., Capobianco J. P., Bishop J., *et al.*, 2001. Road paving, fire regime feedbacks, and the future of Amazon forests. *Forest Ecology and Management*, 154 (3): 395-407.
- Obidzinski K., Andrianto A., Wijaya C., 2007. Cross-border timber trade in Indonesia: critical or overstated problem? *Forest governance lessons from Kalimantan*. *International Forestry Review*, 9 (1): 526-535.
- Olander L. P., Scatena F., Silver W. L., 1998. Impacts of disturbance initiated by road construction in a subtropical cloud forest in the Luquillo Experimental Forest, Puerto Rico. *Forest Ecology and Management*, 109 (1-3): 33-49.
- Padmanaba M., Sheil D., 2014. Spread of the invasive alien species *Piper aduncum* via logging roads in Borneo. *Tropical Conservation Science*, 7 (1): 35-44.
- Pereira R., Zweede J., Asner G. P., Keller M., 2002. Forest canopy damage and recovery in reduced-impact and conventional selective logging in eastern Para, Brazil. *Forest Ecology and Management*, 168 (1-3): 77-89.
- Peres C. A., Barlow J., Laurance W. F., 2006. Detecting anthropogenic disturbance in tropical forests. *Trends in Ecology & Evolution*, 21 (5): 227-229.
- Petrokofsky G., Sist P., Blanc L., Doucet J.-L., Finegan B., Goulet-Fleury S., *et al.*, 2015. Comparative effectiveness of silvicultural interventions for increasing timber production and sustaining conservation values in natural tropical production forests. A systematic review protocol. *Environmental Evidence*, 4 (1): 1-7.
- Pfaff A., Robalino J., Walker R., Aldrich S., Caldas M., Reis E., *et al.*, 2007. Road investments, spatial spillovers, and deforestation in the Brazilian Amazon. *Journal of Regional Science*, 47 (1): 109-123.
- Picard N., Gazull L., Freycon V., 2006. Finding optimal routes for harvesting tree access. *International Journal of Forest Engineering*, 17 (2): 35-49.
- Pinard M. A., Barker M. G., Tay J., 2000. Soil disturbance and post-logging forest recovery on bulldozer paths in Sabah, Malaysia. *Forest Ecology and Management*, 130 (1-3): 213-225.
- Pinard M. A., Putz F. E., Tay J., Sullivan T. E., 1995. Creating timber harvest guidelines for a reduced-impact logging project in Malaysia. *Journal of Forestry*, 93 (10): 41-45.
- Pinard M., Howlett B., Davidson D., 1996. Site conditions limit pioneer tree recruitment after logging of dipterocarp forests in Sabah, Malaysia. *Biotropica*, 28 (1): 2-12.

- Potapov P., Yaroshenko A., Turubanova S., Dubinin M., Laestadius L., Thies C., *et al.*, 2008. Mapping the world's intact forest landscapes by remote sensing. *Ecology and Society*, 13 (2): 51.
- Poulsen J. R., Clark C. J., Bolker B. M., 2011. Decoupling the effects of logging and hunting on an afro-tropical animal community. *Ecological Applications*, 21 (5): 1819-1836.
- Poulsen J. R., Clark C. J., Mavah G., Elkan P. W., 2009. Bushmeat supply and consumption in a tropical logging concession in northern Congo. *Conservation Biology*, 23 (6): 1597-1608.
- Putz F. E., Dykstra D. P., Heinrich R., 2000. Why poor logging practices persist in the tropics. *Conservation Biology*, 14 (4): 951-956.
- Putz F. E., Zuidema P. A., Synnott T., Peña-Claros M., Pinard M. A., Sheil D., *et al.*, 2012. Sustaining conservation values in selectively logged tropical forests: the attained and the attainable. *Conservation Letters*, 5 (4): 296-303.
- Putz F., Sist P., Fredericksen T., Dykstra D., 2008. Reduced-impact logging: Challenges and opportunities. *Forest Ecology and Management*, 256 (7): 1427-1433.
- Redford K., 1992. The empty forest. *BioScience*, 42 (6): 412-422.
- Van Der Ree R., Smith D. J., Grilo C., 2015. *Handbook of road ecology*. Wiley, Chichester, West Sussex, England, 552 p.
- Reid J. W., Bowles I. A., 1997. Reducing the impacts of roads on tropical forests. *Environment: Science and Policy for Sustainable Development*, 39 (8): 10-35.
- Robinson J. G., Redford K. H., Bennett E. L., 1999. Wildlife harvest in logged tropical forests. *Science*, 284 (5414): 595-596.
- Rosa I. M. D., Ahmed S. E., Ewers R. M., 2014. The transparency, reliability and utility of tropical rainforest land-use and land-cover change models. *Global Change Biology*, 20 (6): 1707-22.
- Rutishauser E., Baraloto C., Blanc L., Descroix L., Sota E. D., Kanashiro M., *et al.*, 2015. Rapid tree carbon recovery in Amazonian logged forests. *CURBIO*, 25 (18): 191-201.
- Schulze M., Zweede J., 2006. Canopy dynamics in unlogged and logged forest stands in the eastern Amazon. *Forest Ecology and Management*, 236 (1): 56-64.
- Sessions J., 2007. *Forest road operations in the tropics*. Springer, Berlin, Heidelberg, New York, 170 p.
- Sist P., 2000. Les techniques d'exploitation à faible impact. *Bois et Forêts des Tropiques*, 265 (3): 31-43. [http://bft.cirad.fr/cd/BFT\\_265\\_31-43.pdf](http://bft.cirad.fr/cd/BFT_265_31-43.pdf)
- Sist P., Dykstra D., Fimbel R., 1998. Reduced-impact logging guidelines for lowland and hill Dipterocarp forests in Indonesia. CIFOR Occasional Paper 15. Center for International Forestry Research (CIFOR), Bogor, Indonesia, 19 p.
- Souza C. M., Roberts D. A., Cochrane M. A., 2005. Combining spectral and spatial information to map canopy damage from selective logging and forest fires. *Remote Sensing of Environment*, 98 (2-3): 329-343.
- Steinmann H., 1948. Route, rail, voie fluviale et voie aérienne à travers la grande forêt équatoriale. *Bois et Forêts des Tropiques*, 8: 333-335. [http://bft.cirad.fr/cd/BFT\\_008\\_333-335.pdf](http://bft.cirad.fr/cd/BFT_008_333-335.pdf)
- Swaine M. D., Agyeman V. K., 2008. Enhanced tree recruitment following logging in two forest reserves in Ghana. *Biotropica*, 40 (3): 370-374.
- Trombulak S. C., Frissell C. A., 2000. Review of ecological effects of roads on terrestrial and aquatic communities. *Conservation Biology*, 14 (1): 18-30.
- Tuffier M., 1954. Les niveleuses actuellement fabriquées dans le monde. *Bois et Forêts des Tropiques*, 35: 33-41. [http://bft.cirad.fr/cd/BFT\\_035\\_33-41.pdf](http://bft.cirad.fr/cd/BFT_035_33-41.pdf)
- Uhl C., Kauffman J. B., 1990. Deforestation, fire susceptibility, and potential tree responses to fire in the Eastern Amazon. *Ecology*, 71 (2): 437-449.
- Veldman J. W., Putz F. E., 2010. Long-distance dispersal of invasive grasses by logging vehicles in a tropical dry forest. *Biotropica*, 42 (6): 697-703.
- Van Vliet N., Nasi R., 2007. Mise en évidence des facteurs du paysage agissant sur la répartition de la faune dans une concession forestière. *Bois et Forêts des Tropiques*, 292 (2): 23-37. [http://bft.cirad.fr/cd/BFT\\_292\\_23-37.pdf](http://bft.cirad.fr/cd/BFT_292_23-37.pdf)
- Walsh P., Henschel P., Abernethy K., 2004. Logging speeds little red fire ant invasion of Africa. *Biotropica*, 6 (12): 637-641.
- De Wasseige C., Defourny P., 2004. Remote sensing of selective logging impact for tropical forest management. *Forest Ecology and Management*, 188 (1-3): 161-173.
- Wilkie D. S., Sidle J. G., Boundzanga G. C., 1992. Mechanized logging, market hunting, and a bank loan in Congo. *Conservation Biology*, 6 (4): 570-580.
- Wilkie D., Shaw E., Rotberg F., Morelli G., Auzel P., 2000. Roads, development, and conservation in the Congo Basin. *Conservation Biology*, 14 (6): 1614-1622.
- Zang R., Ding Y., 2009. Forest recovery on abandoned logging roads in a tropical montane rain forest of Hainan Island, China. *Acta Oecologica*, 35 (3): 462-470.
- Ziegler A., Negishi J., Sidle R. C., Gomi T., Noguchi S., Nik A. R., 2007. Persistence of road runoff generation in a logged catchment in Peninsular Malaysia. *Earth Surface Processes and Landforms*, 32 (13): 1947-1970.
- Zimmermann B. L., Kormos C. F., 2012. Prospects for sustainable logging in tropical forests. *BioScience*, 62 (5): 479-487.